

# beard: bfam Elasticity and Rupture Dynamics

Jeremy E. Kozdon   Lucas C. Wilcox  
{jekozdon, lwilcox}@nps.edu

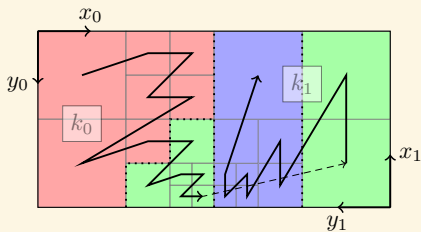
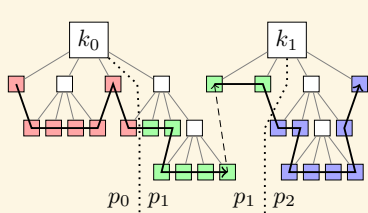
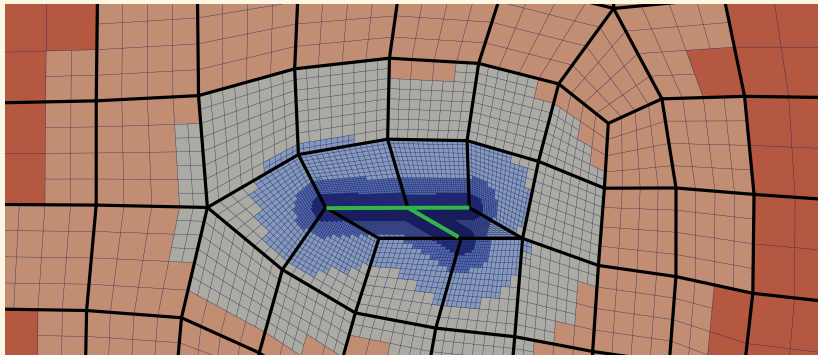


Department of Applied Mathematics  
Naval Postgraduate School

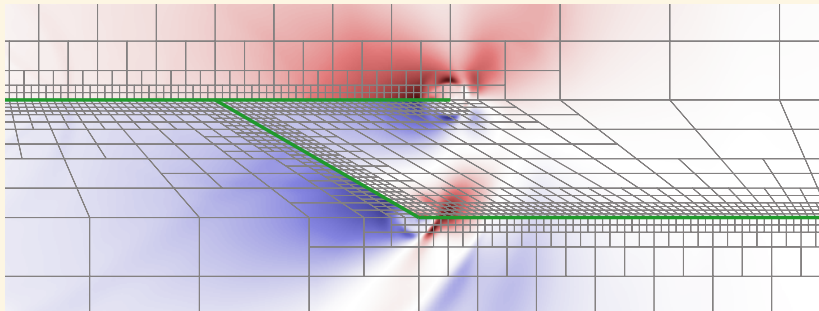
2015 SCEC Rupture Dynamics  
Code Validation Workshop



# hp-Adaptivity



Visit us at <http://bfam.in>



## Current and In-Progress Capabilities

- ▶ high-order discontinuous Galerkin finite element method
- ▶ static and dynamic PH-adaptive on curved hexes
- ▶ cpu and gpu parallelism
- ▶ absorbing boundary condition
- ▶ CUBIT meshes