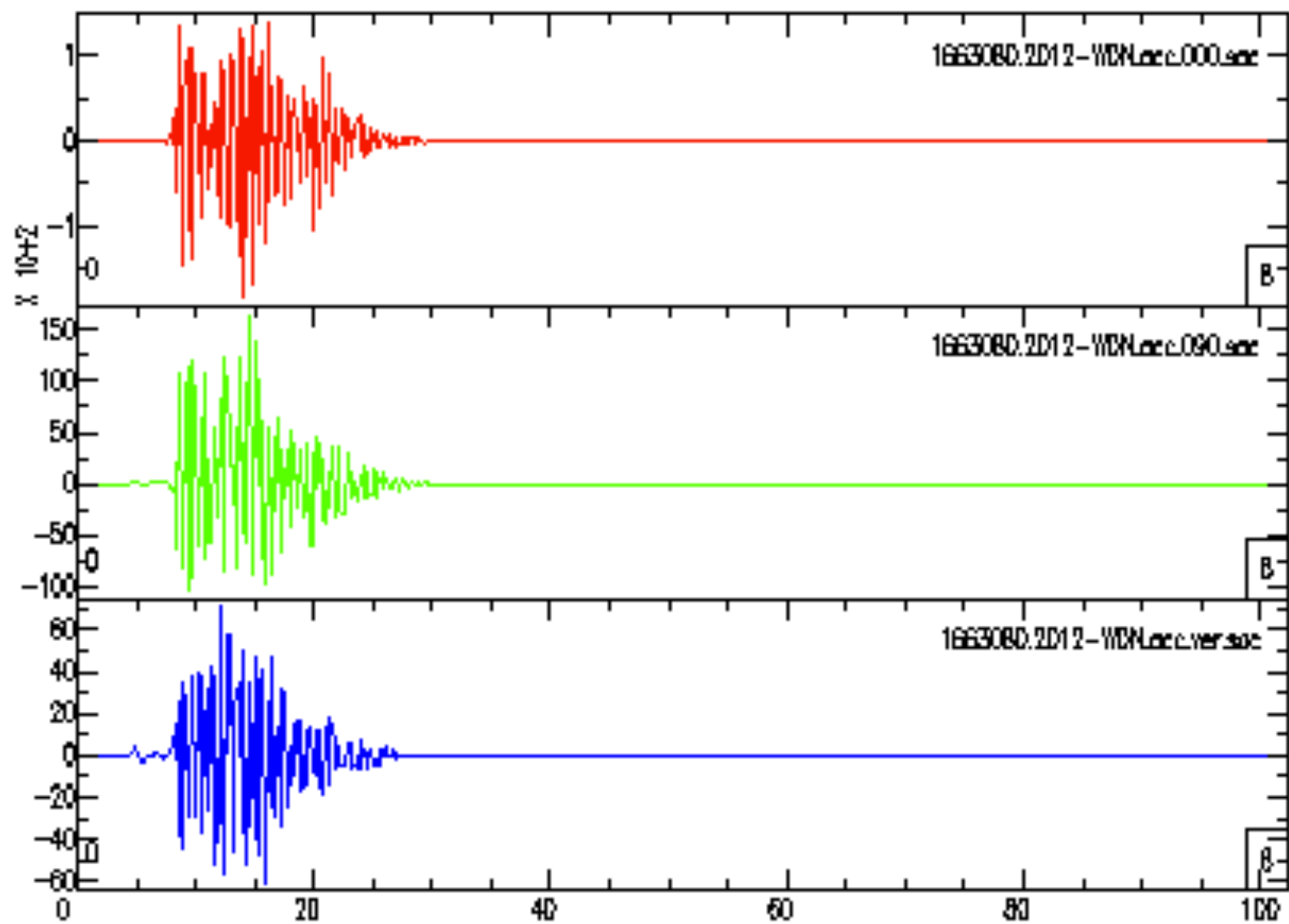


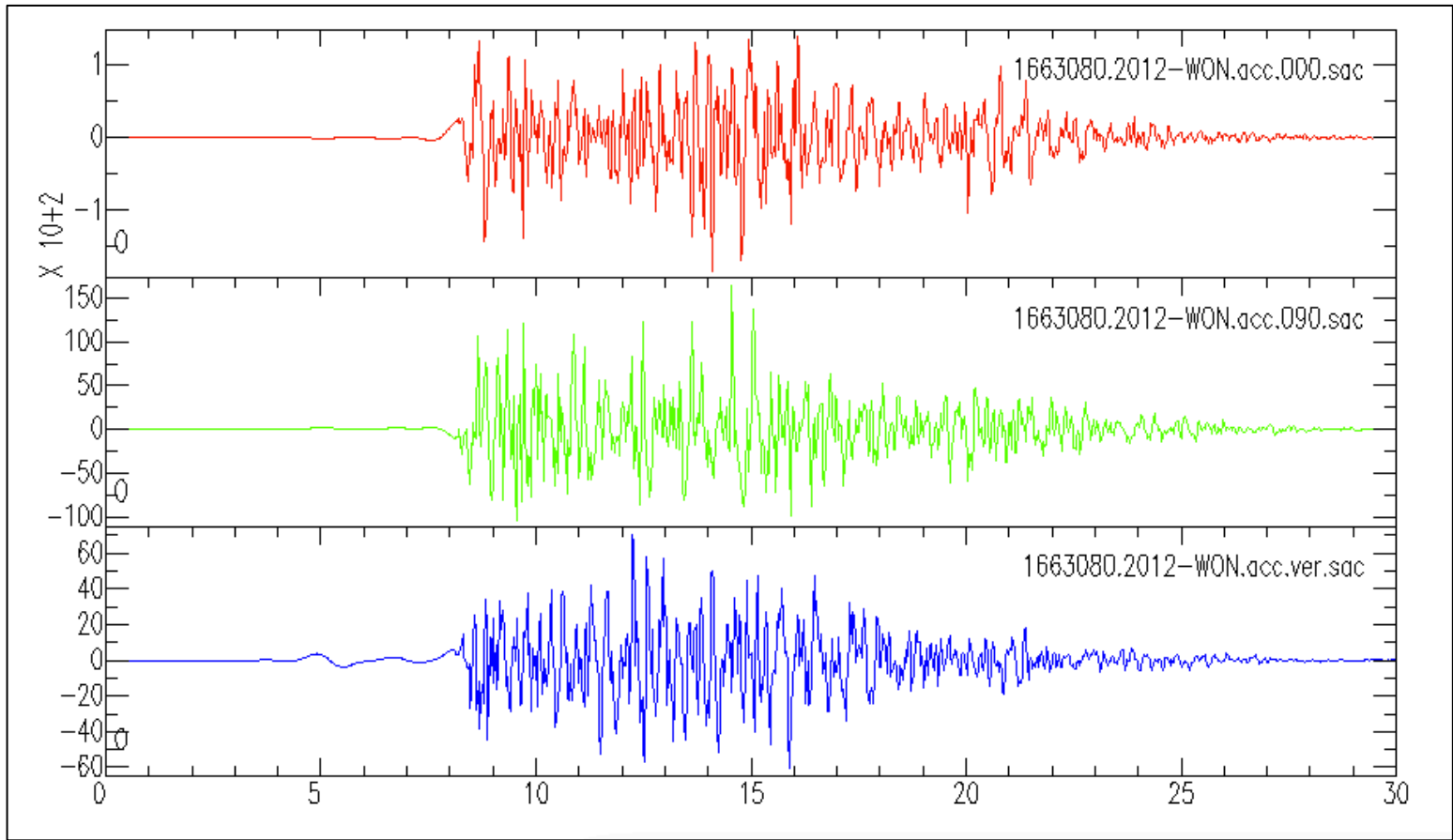
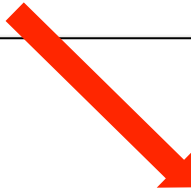
Instructions to use SAC on the platform

```
cme@scec-cme:~/CME/data-files/bbp/results/nr-5sta-gp
File Edit View Search Terminal Help
[cme@scec-cme nr-5sta-gp]$ bbp2sac.py 1663080.2012-WON.acc.bbp
Running: echo '1663080.2012-WON.acc.000' > tmp
Running: toSAC_eri < tmp >> /dev/null 2>&1
Running: echo '1663080.2012-WON.acc.090' > tmp
Running: toSAC_eri < tmp >> /dev/null 2>&1
Running: echo '1663080.2012-WON.acc.ver' > tmp
Running: toSAC_eri < tmp >> /dev/null 2>&1
[cme@scec-cme nr-5sta-gp]$ sac
SEISMIC ANALYSIS CODE [11/11/2013 (Version 101.6a)]
Copyright 1995 Regents of the University of California

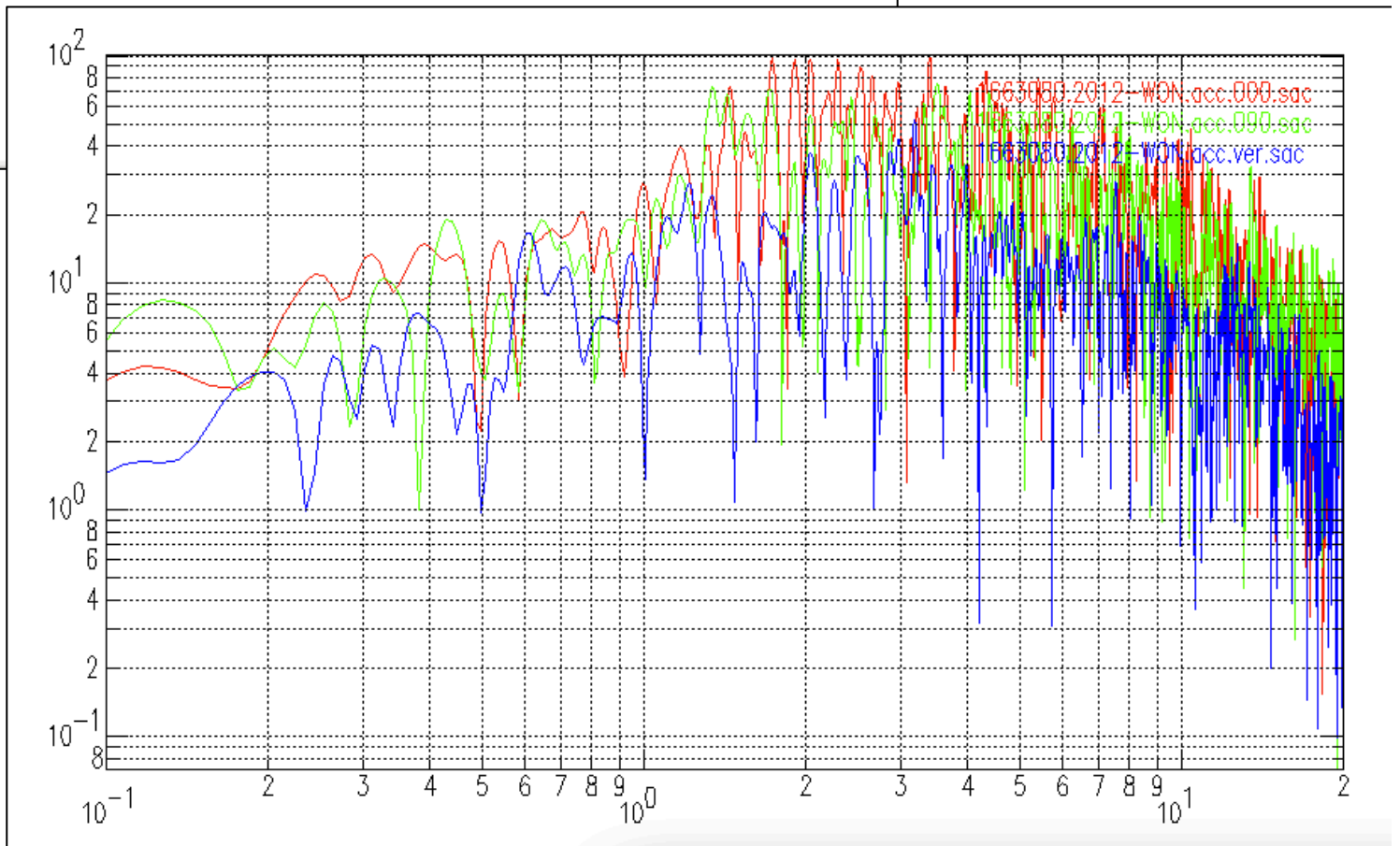
SAC> r *.sac
1663080.2012-WON.acc.000.sac 1663080.2012-WON.acc.090.sac 1663080.2012-WON.acc.v
er.sac
SAC> color r i
SAC> p1
SAC> 
```



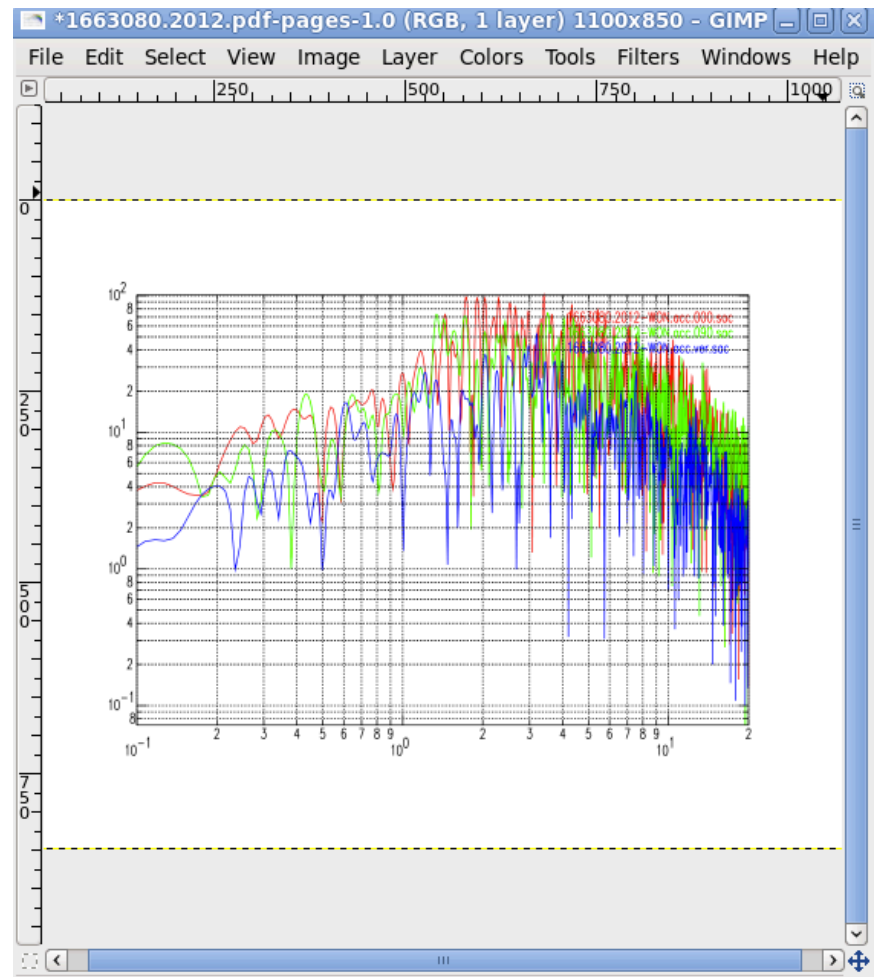
```
SAC> qdp off
SAC> xlim 0 30
SAC> p1
SAC> █
```



```
SAC> xlim off
SAC> loglog
SAC> fft
  DC level after DFT is 0.00049822
  DC level after DFT is 0.00049822 -0.00010761
  DC level after DFT is 0.00049822 -0.00010761 -0.00031005
SAC> xlim 0.1 20
SAC> p2
SAC> grid on
SAC> p2
SAC> █
```



```
SAC> bd sgf
SAC> p2
SAC> sgftops f001.sgf 1663080.2012.ps
SAC> q
[cme@scec-cme nr-5sta-gp]$ ps2pdf 1663080.2012.ps
[cme@scec-cme nr-5sta-gp]$ gimp 1663080.2012.pdf
[cme@scec-cme nr-5sta-gp]$ █
```



```
[cme@scec-cme nr-5sta-gp]$ bbp2sac.py 1663080.2012-WON.rsp
Running: echo '1663080.2012-WON.000' > tmp
Running: toSAC_eri < tmp >> /dev/null 2>&1
Running: echo '1663080.2012-WON.090' > tmp
Running: toSAC_eri < tmp >> /dev/null 2>&1
Running: echo '1663080.2012-WON.ver' > tmp
Running: toSAC_eri < tmp >> /dev/null 2>&1
[cme@scec-cme nr-5sta-gp]$ sac
SEISMIC ANALYSIS CODE [11/11/2013 (Version 101.6a)]
Copyright 1995 Regents of the University of California

SAC> r 1663080.2012-WON.0*0.sac
1663080.2012-WON.000.sac 1663080.2012-WON.090.sac
SAC> color r i
SAC> p2
```

